

Pioneer Real Estate

Shirley Shandley, Broker

PO Box 7 - 698 South Highway 83, Leakey, Texas 78873

830.232.6422 Office * 830.232.5509 FAX

Website: www.hillcountryrealestate.net Email: pioneer@hctc.net

**Property #8
River Oaks
Lot 16
2.28 Acres
Nueces River Access
Listed at \$46,000**

Shirley Shandley, Broker

830.591.4461 cell

pioneer@hctc.net

Ron Williams, Associate

830.591.3375 cell

ronwilliams@hillcountryrealestate.net

Nancy Copple

Broker Associate

830.275.2447 cell

nancycopple@hillcountryrealestate.net

Mike Cone

Broker Associate

830.279.9355 cell

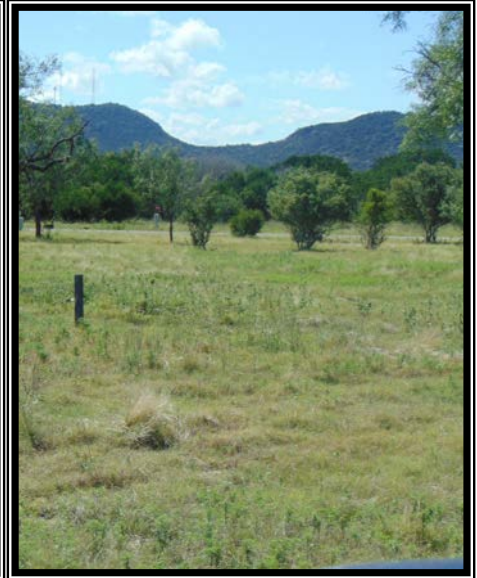
mikecone@hillcountryrealestate.net

Gayla Miller, Associate

830.591.8438 cell

GGabroMiller@hillcountryrealestate.net

DISCLOSURE: All information contained herein is from sources deemed reliable, but is not guaranteed by this agency and is subject to change in price or terms, correction, prior sale, or withdrawal without notice.



Property #8: 2.28 acres with beautiful Nueces River access in River Oaks Subdivision. City water and electrical service are available. The level building site has great views of the surrounding hillsides. Gated entry and paved street. This property is quiet and peaceful and perfect for vacation or retirement home and is walking distance to the river and park area. Available for only \$46,000.