

Pioneer Real Estate

Shirley Shandley, Broker

PO Box 7 - 698 South Highway 83, Leakey, Texas 78873

830.232.6422 Office * 830.232.5509 FAX

Website: www.hillcountryrealestate.net Email: pioneer@hctc.net

Property #15

Frio River Place

Block 5 Lot 31

1.68 Acres

Listed at \$95,000

Shirley Shandley, Broker

830.591.4461 cell

pioneer@hctc.net

Ron Williams, Associate

830.591.3375 cell

ronwilliams@hillcountryrealestate.net

**Nancy Copple
Broker Associate**

830.275.2447 cell

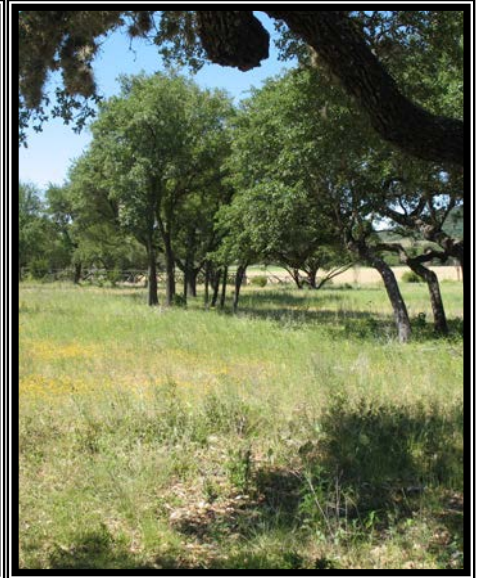
nancycopple@hillcountryrealestate.net

**Mike Cone
Broker Associate**

830.279.9355 cell

mikecone@hillcountryrealestate.net

DISCLOSURE: All information contained herein is from sources deemed reliable, but is not guaranteed by this agency and is subject to change in price or terms, correction, prior sale, or withdrawal without notice.



Property #15: Beautiful level 1.68 AC. Frio River access lot with mature oaks and gorgeous views of the surrounding hills. Frio River Place is a gated residential/recreational subdivision and located just minutes from Leakey. Subdivision amenities include underground utilities, sensible restrictions to protect your investment, RV storage, and best of all access to the crystal clear waters of the Frio River thru a private park located inside the subdivision. \$95,000