

# Pioneer Real Estate

**Shirley Shandley, Broker**

PO Box 7 - 698 South Highway 83, Leakey, Texas 78873

830.232.6422 Office \* 830.232.5509 FAX

Website: [www.hillcountryrealestate.net](http://www.hillcountryrealestate.net) Email: [pioneer@hctc.net](mailto:pioneer@hctc.net)

## Property #16

### 90.87 Acres

### Listed at \$505,000

**Shirley Shandley, Broker**

830.591.4461 cell

[pioneer@hctc.net](mailto:pioneer@hctc.net)

**Ron Williams, Associate**

830.591.3375 cell

[ronwilliams@hillcountryrealestate.net](mailto:ronwilliams@hillcountryrealestate.net)

**Roel Gonzalez, Associate**

210.288.8507 cell

[roelgonzalez@hillcountryrealestate.net](mailto:roelgonzalez@hillcountryrealestate.net)

**Nancy Copple**

**Broker Associate**

830.275.2447 cell

[nancycopple@hillcountryrealestate.net](mailto:nancycopple@hillcountryrealestate.net)

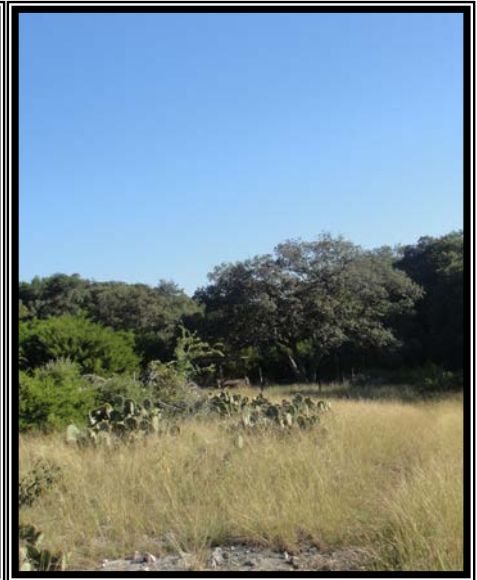
**Mike Cone**

**Broker Associate**

830.279.9355 cell

[mikecone@hillcountryrealestate.net](mailto:mikecone@hillcountryrealestate.net)

**DISCLOSURE:** All information contained herein is from sources deemed reliable, but is not guaranteed by this agency and is subject to change in price or terms, correction, prior sale, or withdrawal



**Property #16:** 90.87 Acres +/- Real County. Just in time for hunting season and located minutes from Leakey off scenic Highway 337 and bordering a large ranch. Great hunting for Axis, Sika and Whitetail Deer, Blackbuck Antelope, turkey and other native game. Wife friendly cabin, water well, electricity, and septic. Also, 2 RV hookups and metal storage building. Easy access and rolling terrain. \$505,000