

# 4.56 Acres Nueces River Access

## **Pioneer Real Estate**

PO Box 7  
698 Highway 83 South  
Leakey, Texas 78873  
Phone: 830-232-6422  
Fax: 830-232-5509  
E-mail: pioneer@hctc.net  
www.hillcountryrealestate.net

**Shirley Shandley, Broker**  
830-591-4461 cell

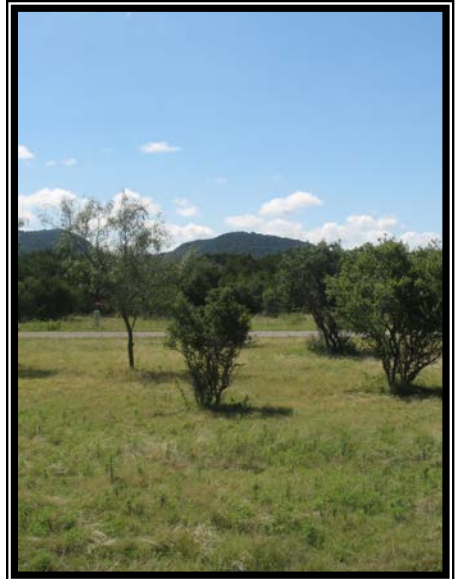
**Ron Williams, Associate**  
830-591-3375 cell

**Roel Gonzalez, Associate**  
210-288-8507 cell

**Nancy Copple  
Broker Associate**  
830-275-2447 cell

**Mike Cone  
Broker Associate**  
830-279-9355 cell

ALL INFORMATION CONTAINED HEREIN  
IS FROM SOURCES DEEMED RELIABLE,  
BUT IS NOT GUARANTEED BY THIS  
AGENCY AND IS SUBJECT TO CHANGE  
IN PRICE OR TERMS, CORRECTION,  
PRIOR SALE, OR WITHDRAWAL  
WITHOUT NOTICE.



**Property #30:** 4.56 total acres with beautiful Nueces River access in River Oaks Subdivision. City water and electrical service are available and septic is installed. The level building site has great views of the surrounding hillsides. Gated entry and paved street. This property is quiet and peaceful and perfect for vacation or retirement home. Available for only \$84,000.