



Pioneer Real Estate

Shirley Shandley, Broker

PO Box 7 - 698 South Highway 83, Leakey, Texas 78873

830.232.6422 Office

Website: www.hillcountryrealestate.net Email: pioneer@hctc.net

Property #7 **Concan Ranch** **Tract 81** **20.49 Acres+/-** **Listed at \$400,000**

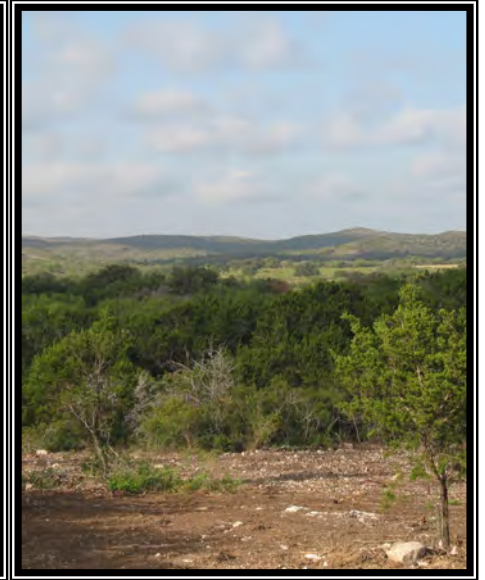
Shirley Shandley
Owner / Broker
830.591.4461 cell
pioneer@hctc.net

Ron Williams
Associate
830.591.3375 cell
ronwilliams@hillcountryrealestate.net

Mike Cone
Broker Associate
830.279.9355 cell
mikecone@hillcountryrealestate.net

Gayla Miller
Associate
830.591.8438 cell
GGabroMiller@hillcountryrealestate.net

DISCLOSURE: All information contained herein is from sources deemed reliable, but is not guaranteed by this agency and is subject to change in price or terms, correction, prior sale, or withdrawal without notice.



Property #7: Ready to build your dream home near the Frio River? This estate sized 20.49 +/- acre tract of land is easily accessed, has considerable frontage on Hwy 127 and is just minutes from Concan. Gentle topography allows you to effortlessly traverse the property and there are incredible long panoramic views of the surrounding hills and valleys. Sellers have selectively cleared the cedar and constructed an earthen tank & large building pad site. Electricity is in place, telephone service is available and you would drill a well for water. Axis & whitetail deer are known to inhabit the area as well as hogs, turkey, & dove. Hwy 127 is a major corridor to the Frio Canyon with a large volume of daily tourist traffic so this listing presents a possible commercial opportunity as well. Call for more details or to set up an appointment to see this property. \$400,000