

# Pioneer Real Estate

**Shirley Shandley, Broker**

PO Box 7 - 698 South Highway 83, Leakey, Texas 78873

830.232.6422 Office \* 830.232.5509 FAX

Website: [www.hillcountryrealestate.net](http://www.hillcountryrealestate.net) Email: [pioneer@hctc.net](mailto:pioneer@hctc.net)

**Property #16**  
**Rio Frio, Uvalde County**  
**20.60 Acres**  
**Listed at \$10,000**  
**Per Acre**

**Shirley Shandley**  
**Owner / Broker**  
830.591.4461 cell  
[pioneer@hctc.net](mailto:pioneer@hctc.net)

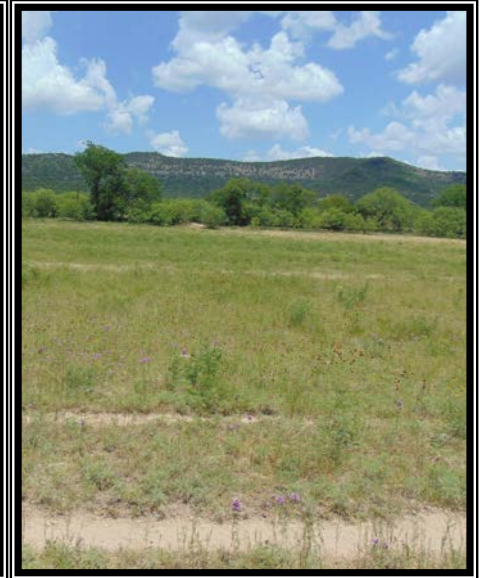
**Ron Williams, Associate**  
830.591.3375 cell  
[ronwilliams@hillcountryrealestate.net](mailto:ronwilliams@hillcountryrealestate.net)

**Nancy Copple**  
**Broker Associate**  
830.275.2447 cell  
[nancycopple@hillcountryrealestate.net](mailto:nancycopple@hillcountryrealestate.net)

**Mike Cone**  
**Broker Associate**  
830.279.9355 cell  
[mikecone@hillcountryrealestate.net](mailto:mikecone@hillcountryrealestate.net)

**Gayla Miller, Associate**  
830.591.8438 cell  
[GGabroMiller@hillcountryrealestate.net](mailto:GGabroMiller@hillcountryrealestate.net)

**DISCLOSURE:** All information contained herein is from sources deemed reliable, but is not guaranteed by this agency and is subject to change in price or terms, correction, prior sale, or withdrawal without notice.



**Property #16:** Very hard to find acreage in the Frio Canyon that has current Agriculture Tax Evaluation, no improvements, no restrictions and no HOA. The 20.60 acres has potential for a home site, grazing for cattle or horses or to be developed as the new owner wishes. The land is flat with deep soil, and is partially fenced. This property is located near the small community of Rio Frio, and is only a short distance to the Frio River and to Garner State Park. It has easy access from a county maintained road. Electrical service is nearby and will need a well. This parcel of land is a bargain for \$10,000 per acre. Additional acres with improvements may be available. See Pioneer Real Estate for details.