



Pioneer Real Estate

Shirley Shandley, Broker

PO Box 7 - 698 South Highway 83, Leakey, Texas 78873

830.232.6422 Office

Website: www.hillcountryrealestate.net Email: pioneer@hctc.net

Property #17
Rio Nueces Ranch
Lots 42 & 43
11.078 Acres+/-
Nueces Riverfront
Listed at \$150,000

Shirley Shandley
Owner / Broker
830.591.4461 cell
pioneer@hctc.net

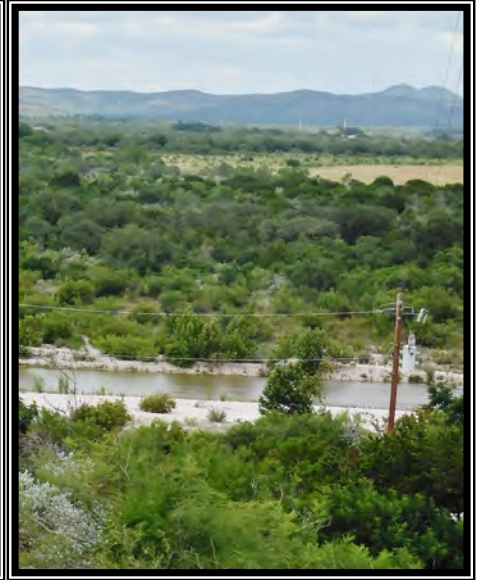
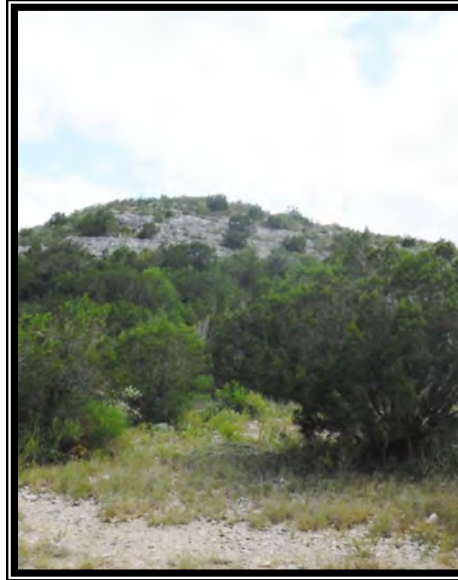
Ron Williams
Associate
830.591.3375 cell
ronwilliams@hillcountryrealestate.net

Mike Cone
Broker Associate
830.279.9355 cell
mikecone@hillcountryrealestate.net

Gayla Miller
Associate
830.591.8438 cell
GGabroMiller@hillcountryrealestate.net

Chris Heimann
Associate
210.827.1607 cell
chrishemann@hillcountryrealestate.net

DISCLOSURE: All information contained herein is from sources deemed reliable, but is not guaranteed by this agency and is subject to change in price or terms, correction, prior sale, or withdrawal without notice.



Property #17: NUECES RIVER FRONTAGE!!! Sweeping mountain top views from this 11+ acres in Rio Nueces leading to the sparkling Nueces River frontage. Across the river are views of cows grazing in the hay meadow & large pecan orchard which adds to the serenity & peacefulness for the new owner. No HOA fees! Hike the hilltops or enjoy the fireside stories with steaks on the outdoor grill. Fishing, swimming, tubing, arrowhead & rock hunting are just some of the activities to be enjoyed. These 2 lots will generate a great deal of viewing interest!!! Buyers please promptly schedule a viewing to be able to enjoy numerous recreational activities THIS summer. Reasonably priced at \$150,000