



# Pioneer Real Estate

**Shirley Shandley, Broker**

PO Box 7 - 698 South Highway 83, Leakey, Texas 78873

830.232.6422 Office

Website: [www.hillcountryrealestate.net](http://www.hillcountryrealestate.net) Email: [pioneer@hctc.net](mailto:pioneer@hctc.net)

## Property #17

4.36 Acres

Saddle Mountain

Subdivision

Lot 49C

Rio Frio, Texas

Listed at \$126,500

### Shirley Shandley

Owner / Broker

830.591.4461 cell

[pioneer@hctc.net](mailto:pioneer@hctc.net)

### Mike Cone

Broker Associate

830.279.9355 cell

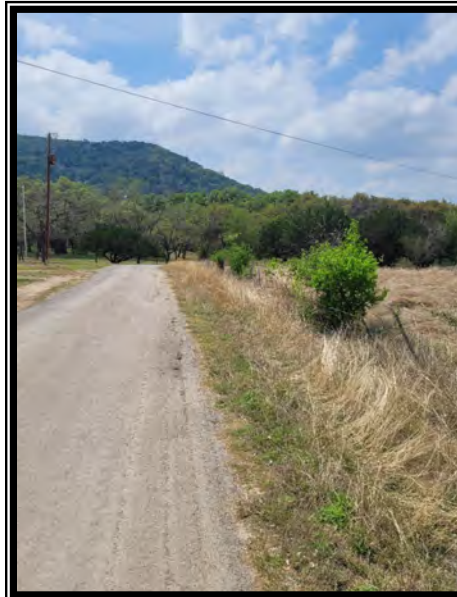
[mikecone@hillcountryrealestate.net](mailto:mikecone@hillcountryrealestate.net)

### Gayla Miller

Associate

830.591.8438 cell

[GGabroMiller@hillcountryrealestate.net](mailto:GGabroMiller@hillcountryrealestate.net)



*DISCLOSURE: All information contained herein is from sources deemed reliable, but is not guaranteed by this agency and is subject to change in price or terms, correction, prior sale, or withdrawal without notice.*

**Property #17:** Gardener's Delight! 4.36 Ac. In the Rio Frio area with 150' of creek front which is flowing at this time but subject to change due to weather. There are many possibilities for orchards, gardens, and homesites. Electricity, telephone and water available. The property has tillable soil, is partially fenced and horse friendly! Priced at \$126,500.